

YEAR 2006

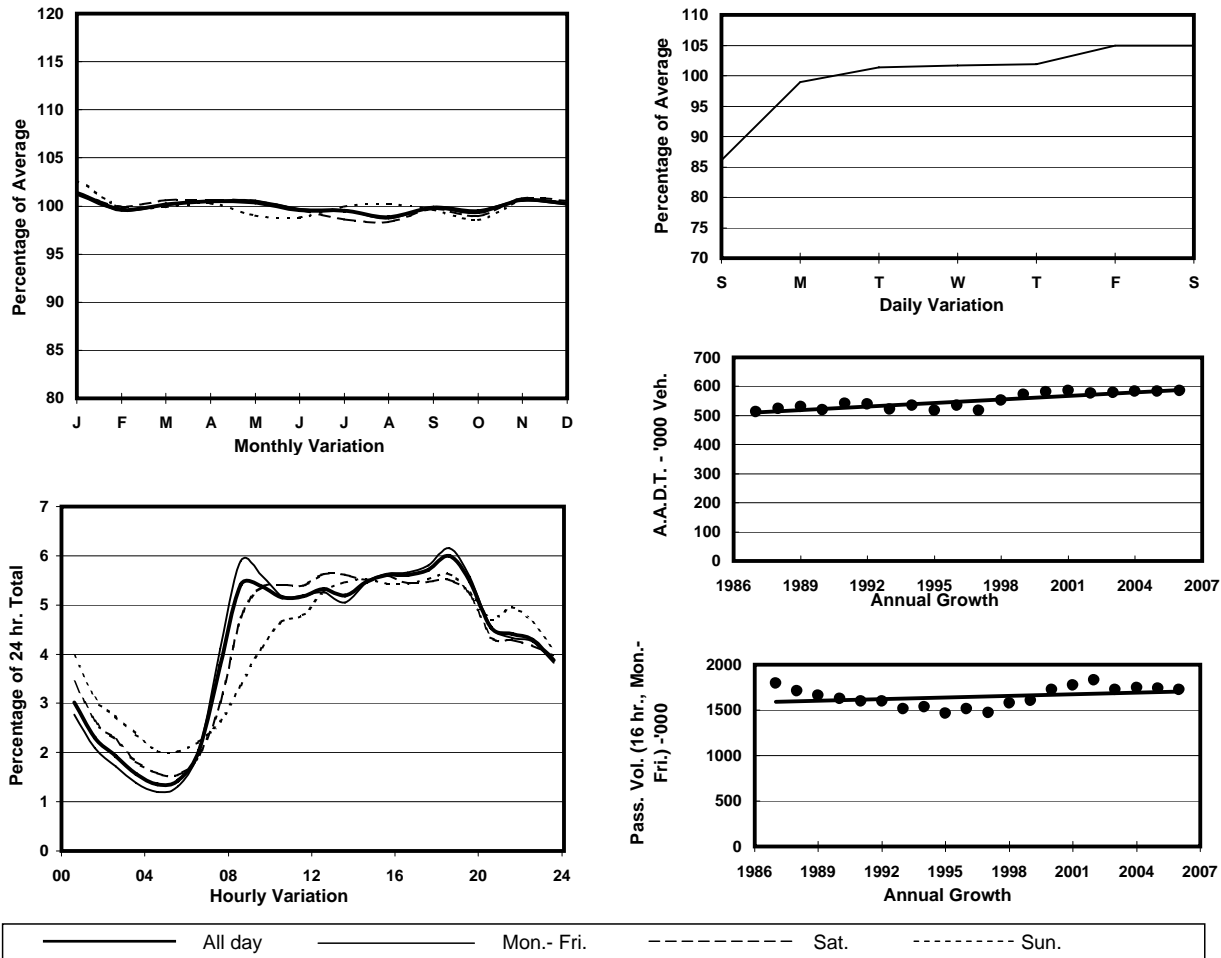
Location

Screenline C-C(Kowloon Peninsula South of Dundas Street)

Stations on Cordon/Screenline

3001, 3006, 3014, 3024, 3025, 3026, 3103, 4205, 4209, 4210, 4211, 4212, 4213, 4214, 4215, 4220, 4401, 4403 and 4404

1. TRAFFIC FLOW VARIATION AND GROWTH



2. TRAFFIC CHARACTERISTICS (BY DIRECTION)

Parameter	All - Day	Mon. - Fri.	Sat.	Sun.
SOUTH BOUND				
A.A.D.T.	296380	304900	312640	254130
R 12 / 24 - %	65.5	66.7	64.1	60.2
R 16 / 24 - %	83.2	84.3	81.5	78.8
AM Peak Hour	0800-0900	0800-0900	0900-1000	0900-1000
One-way flow at AM peak hour	17760	19960	18270	11290
T - % (AM)	-	14.9	-	-
PM Peak Hour	1800-1900	1800-1900	1800-1900	1800-1900
One-way flow at PM peak hour	17920	18910	17130	14740
T - % (PM)	-	8.9	-	-
Prop.of commercial vehicles - 16 hr.	-	12.1	-	-
NORTH BOUND				
A.A.D.T.	288730	295400	306300	254150
R 12 / 24 - %	62	63.2	61.4	55.7
R 16 / 24 - %	81.7	83	80.1	76.2
AM Peak Hour	0900-1000	0800-0900	0900-1000	0900-1000
One-way flow at AM peak hour	14410	15440	14930	9730
T - % (AM)	-	14.4	-	-
PM Peak Hour	1800-1900	1800-1900	1700-1800	1700-1800
One-way flow at PM peak hour	17140	18020	17490	14030
T - % (PM)	-	10.1	-	-
Prop.of commercial vehicles - 16 hr.	-	11.9	-	-

3. OTHER INFORMATION AND COMMENT

4. Vehicle classification and occupancy - Monday to Friday

Time		Class of vehicle									
		Motor	Private	Taxi	Private	PLB	Goods veh.		Non	Fr. Bus	
		Cycle	Car		LB		Light	M & H	Fr. Bus	SD	DD
0700-0800	Pro	4.0	20.9	30.1	1.7	5.4	18.1	5.9	6.4	0.1	7.5
	Ocp	1.1	1.4	2.0	4.6	9.3	1.5	1.3	10.3	9.0	28.8
0800-0900	Pro	4.0	37.9	23.2	1.0	4.4	14.9	3.8	5.4	0.1	5.3
	Ocp	1.1	1.4	2.0	4.2	11.7	1.6	1.4	16.6	11.6	37.7
0900-1000	Pro	3.4	31.5	25.3	1.1	3.6	21.4	5.0	3.1	0.1	5.5
	Ocp	1.1	1.3	1.8	2.9	8.9	1.6	1.4	11.5	7.5	20.7
1000-1100	Pro	3.1	26.5	24.6	1.2	3.4	28.5	5.4	2.1	0.1	5.2
	Ocp	1.0	1.5	1.8	2.5	7.2	1.6	1.4	11.6	6.7	17.7
1100-1200	Pro	2.9	27.9	23.8	1.4	3.5	28.5	5.0	2.4	0.1	4.5
	Ocp	1.1	1.5	1.8	2.2	6.5	1.5	1.4	11.7	7.8	20.1
1200-1300	Pro	2.6	29.0	25.1	1.8	3.6	24.9	4.8	3.7	0.1	4.4
	Ocp	1.0	1.5	1.9	4.5	6.9	1.6	1.4	12.9	7.8	20.4
1300-1400	Pro	2.8	27.6	24.4	1.5	3.6	26.6	5.5	2.9	0.1	4.8
	Ocp	1.1	1.6	1.9	3.1	7.5	1.6	1.4	11.5	8.0	21.2
1400-1500	Pro	3.3	30.5	21.9	1.6	3.1	27.7	5.2	2.5	0.1	4.1
	Ocp	1.0	1.5	2.0	2.3	7.2	1.6	1.4	10.3	10.2	21.6
1500-1600	Pro	3.1	32.5	23.6	1.8	3.0	23.9	4.6	3.1	0.1	4.4
	Ocp	1.0	1.5	1.9	3.5	7.5	1.6	1.4	14.4	8.2	21.3
1600-1700	Pro	3.3	34.1	24.3	1.5	3.2	21.9	3.8	3.0	0.1	4.9
	Ocp	1.0	1.5	1.9	3.1	8.7	1.6	1.4	13.2	10.1	23.2
1700-1800	Pro	4.3	36.3	22.9	1.0	3.9	20.3	3.0	2.7	0.1	5.5
	Ocp	1.1	1.5	1.9	2.5	9.9	1.6	1.3	11.4	13.9	30.0
1800-1900 Peak Hour	Pro	5.3	41.4	24.0	0.8	5.2	13.6	2.0	2.6	0.1	5.0
	Ocp	1.1	1.5	2.1	3.2	11.2	1.6	1.3	20.4	13.0	40.0
1900-2000	Pro	4.0	44.7	27.7	0.3	5.5	9.4	1.4	2.3	0.1	4.6
	Ocp	1.1	1.5	2.1	2.0	10.2	1.5	1.3	15.9	11.6	33.0
2000-2100	Pro	3.1	39.0	34.8	0.3	5.7	7.6	1.9	2.3	0.1	5.1
	Ocp	1.2	1.6	1.9	2.4	9.3	1.5	1.3	13.6	8.0	25.2
2100-2200	Pro	4.1	36.1	37.6	0.5	5.6	6.7	1.5	2.4	0.1	5.6
	Ocp	1.1	1.6	1.9	2.4	7.9	1.6	1.2	10.2	5.4	23.8
2200-2300	Pro	3.1	38.6	38.6	0.6	6.1	4.9	1.0	1.6	0.1	5.4
	Ocp	1.2	1.7	2.0	2.6	8.5	1.7	1.4	15.0	5.5	23.3
16 hours	Pro	3.6	33.6	26.5	1.1	4.2	19.0	3.7	3.0	0.1	5.1
	Ocp	1.1	1.5	1.9	3.2	8.9	1.6	1.4	13.3	9.1	26.0

Legend

- Pro.** Proportion of vehicles in % (Sum may not add up to 100% due to figure rounding)
- Ocp.** Average occupancy of vehicles
- M & H** Medium and Heavy